

# Eagle HC 72-V 390-400 Watt

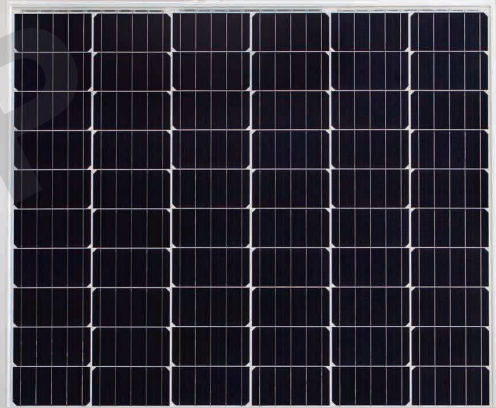
MONO CRYSTALLINE MODULE

Positive power tolerance of 0~+3%

(Draft)



PERC



## KEY FEATURES



### Innovative Solar Cells

Five busbar mono PERC half cell technology



### High Efficiency

Higher module conversion efficiency (up to 19.88%) due to lower resistance characteristics



### High Voltage

UL and IEC 1500V certified; lowers BOS costs and yields better LCOE



### PID-Free

World's 1st PID-Free module



### Low-Light Performance

Advanced glass technology improves light absorption and retention

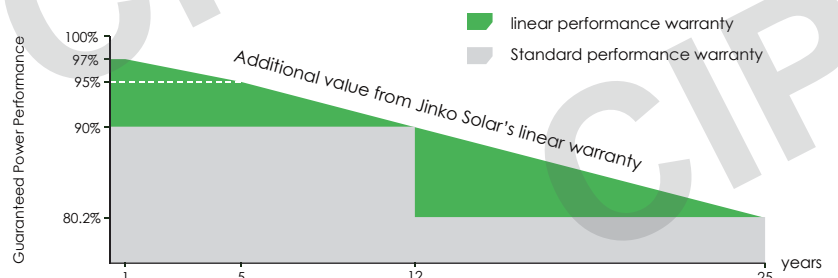


### Strength and Durability

Certified for high snow (5400 Pa) and wind (2400 Pa) loads

## LINEAR PERFORMANCE WARRANTY

10 Year Product Warranty • 25 Year Linear Power Warranty



- ISO9001:2008 Quality Standards
- ISO14001:2004 Environmental Standards
- OHSAS18001 Occupational Health & Safety Standards
- IEC61215, IEC61730 certified products

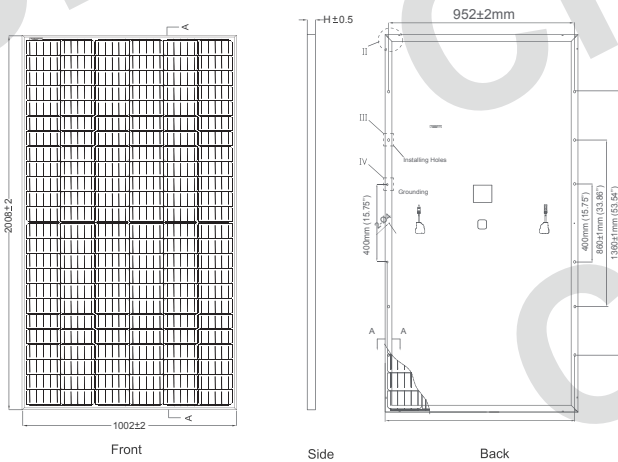
Nomenclature:

JKM400M-72H-V

Code	Cell
null	Full
H	Half

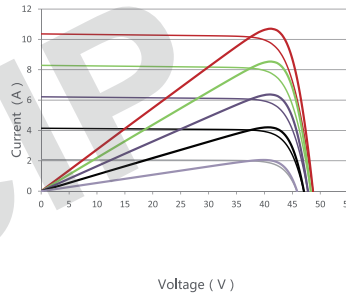


## Engineering Drawings

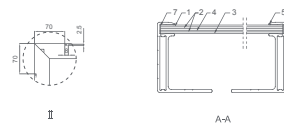
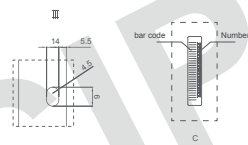
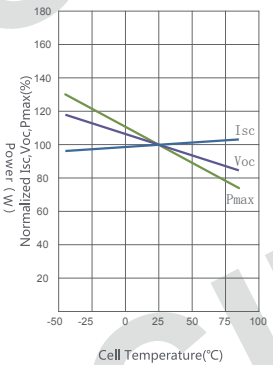


## Electrical Performance & Temperature Dependence

Current-Voltage & Power-Voltage Curves (400W)



Temperature Dependence of Isc, Voc, Pmax



## Packaging Configuration

( Two pallets =One stack )

26pcs/pallet , 52pcs/stack, 572 pcs/40'HQ Container

## Mechanical Characteristics

Cell Type	Mono-crystalline PERC 158.75×158.75mm
No. of Half-cells	144 (12×12)
Dimensions	2008×1002×40mm (79.06×39.45×1.57 inch)
Weight	27 kg (59.5 lbs)
Front Glass	4.0mm, Anti-Reflection Coating, High Transmission, Low Iron, Tempered Glass
Frame	Anodized Aluminium Alloy
Junction Box	IP67 Rated
Output Cables	anode 1400mm, cathode 1400mm or Customized Length

## SPECIFICATIONS

Module Type	JKM390M-72H-V		JKM395M-72H-V		JKM400M-72H-V	
	STC	NOCT	STC	NOCT	STC	NOCT
Maximum Power (Pmax)	390Wp	294Wp	395Wp	298Wp	400Wp	302Wp
Maximum Power Voltage (Vmp)	41.1V	39.1V	41.4V	39.3V	41.7V	39.6V
Maximum Power Current (Imp)	9.49A	7.54A	9.55A	7.60A	9.60A	7.66A
Open-circuit Voltage (Voc)	48.3V	48.0V	48.5V	48.2V	48.7V	48.5V
Short-circuit Current (Isc)	10.01A	8.02A	10.12A	8.09A	10.23A	8.16A
Module Efficiency STC (%)	19.38%		19.63%		19.88%	
Operating Temperature(°C)	-40°C~+85°C					
Maximum system voltage	1500VDC(UL)/1500VDC(IEC)					
Maximum series fuse rating	20A					
Power tolerance	0~+3%					
Temperature coefficients of Pmax	-0.37%/°C					
Temperature coefficients of Voc	-0.29%/°C					
Temperature coefficients of Isc	0.048%/°C					
Nominal operating cell temperature (NOCT)	45±2°C					

STC: Irradiance 1000W/m<sup>2</sup> Cell Temperature 25°C AM=1.5

NOCT: Irradiance 800W/m<sup>2</sup> Ambient Temperature 20°C AM=1.5 Wind Speed 1m/s

\* Power measurement tolerance: ± 3%